

IMPORTANT - READ OPERATOR'S MANUAL BEFORE OPERATION OR MAKING ADJUSTMENTS

## Deluxe Seat Adjustment

Easy hand lever action allows forward and back movement of seat. No bolts to loosen or tighten.

## Mower Blade Operation

To start mower blades, pull out on blade drive switch handle, then lift to "ON" position.

To stop mower blades, move switch handle to "OFF" position.

## Body Removal

1. Disconnect throttle cable from engine.
2. Disconnect the rear wiring loom from the body by lightly squeezing the Econo-Seal plug. This plug is located at the left rear of the body.
3. Remove 4 control lever bolts and remove upper control levers (P/N 9079 & 9080).
4. Remove the 2 attach nuts on floor of body and unfasten latches located on each side of body at rear.
5. Place height adjustment lever in vertical position, engage parking brake and carefully lift body up and off chassis.
6. Reverse the above procedure for assembly.

## Safety Checks - "Important"

1. After reassembly, while on seat, attempt to start engine with mower deck engaged. Engine should not start. If engine does start, return to an Authorized Dixon Dealer for adjustment or repair.
2. Disengage the mower deck and start the engine. With operator in normal mowing position, engage mower deck and remove weight from seat. The engine should stop. If engine does not stop when operator rises from seat, return to an Authorized Dixon Dealer for adjustment or repair.

## Parking Brake Adjustment

Remove body as described above. Adjustment points are located at rear of trans-axle on each side. Remove cotter pin from swivel fitting (P/N 2172). Turn swivel fitting on brake rod (P/N 5100) in to tighten - just enough to prevent brake from slipping when engaged. CAUTION: Over tightening may cause premature wear on brake band (P/N 5085).

## Mower Drive Belt Adjustment

No adjustment necessary, the spring-loaded idler pulley maintains proper tension throughout belt life.

## Removing Mower Deck

1. Remove mower deck drive belt (P/N 6111) by pulling idler assembly (P/N 1671) away from belt, and remove belt from rear pulley.
2. Remove 4 attach pins (P/N 6107) and clips from 4 mower deck attach points and 2 stabilizer bars (P/N 6159).
3. Raise front of mower chassis and roll free of mower deck for service and/or replacement.
4. To re-install, reverse the above procedure.

## Removing Mower Cutter Blade

Secure mower cutter blade (P/N 6013) from turning (observe blade position when removing) remove blade bolt from center of blade.

WARNING: Due to possible sharp edges on the cutter blade, caution should be used when service is required on the blades to prevent injury.



## PARTS LIST FOR ZTR 424/427

PART	NAME	PART	NAME	PART NAME	PARTNAME
1015	Caster	3079	3/8-16 x 3/4 HH Bolt	3605 Clutch Decal (Notice)	5109 Molded Cone/Keyed (ea.)
1022	Caster Wheel 4 Tire	3083	1/4-20 UNC x 1/2 Rd. Hd. Bolt	3606 J Bolt	5110 Cone Frame Shaft
1030	Upper Lift Link	3085	3/8-16 UNC Acorn Nut	3611 Body Latch	5111 Sleeve (fits 5110 shaft)
1039	Lower Lift Link	3087	5/16-18 UNC x 3/4 HH Bolt Gr5	3638 Decal (427)	5112 KeySq. 3/16x1 1/2(flts 5110)
1108	Tire - Front Wheel	3088	1/4-20 x 1 HH Bolt Gr 5	3641 Body Plug	5133 Spring
1109	Inner Tube - Front Wheel	3090	1/2-20 UNF x 1 1/4 HH Bolt Gr2	3649 Fuel Line Clamp (427)	5136 #1 Tool (4.06 x 9/16 dia.)
1110	Caster Axle Bushing	3091	1/4-20 UNF Hex Lug Nut	3650 Fuel Line Filter (427)	5137 #2A Tool (5.63 x 9/16 dia.)
1140	Caster Wheel Bearing	3093	5/16-18 UNC x 1 HH Bolt Gr5	3651 Fuel Line 10" (427)	5138 #2B Tool
1160	Frame	3101	7/16 Helical Lockwasher	3652 Fuel Line 21" (427)	5139 #3 Tool
1164	Regulator Mount (427)	3105	1/4 x 1 1/4 Spirol Pin	3657 Exhaust Pipe (427)	5140 #4 Tool
1166	Tie Bar	3106	1/4 x 1 Spirol Pin	3658 Muffler (427)	5152 Torque Rod
1502	Control Rod Assembly	3107	1/4 x 1 1/2 Spirol Pin	3659 Heat Shield (427)	5153 Cradle Frame
1506	Hub Flange	3118	Disc Spring	3660 Spacer (427)	5154 Front Tube
1512	Rear Tire	3128	7/16-14 UNC Hex Jam Nut	3661 Spring (427)	5155 Transaxle Assembly
1536	Chain Connecting Link	3133	#8-32 x 1 1/2 TR 3 Screw	3662 Muffler Bracket (427)	5156 Cradle Shaft
1544	Bellcrank	3134	1/4-28 x 1/4 Soc. Set Screw	3663 Regulator (427)	5158 Support Assembly L
1636	Bellcrank Kit	3161	5/16-24 UNF Nut LH Thread	3664 Clamp (427)	5159 Support Assembly R
1647	Control Pin	3174	1/2-13 x 1 HH Bolt	4009 Wire Clip	5162 Support L
1655	Transaxle Idler Pulley	3175	1/2-13 x 1 1/2 HH Bolt	4013 Wire Tie	5163 Support R
1657	Transaxle Idler Spring	3178	3/18-16 x 2 1/2 HH Bolt Gr5	4047 Seat Switch	5164 9T Sprocket
1667	Lower Control Lever	3180	1/4-20 Hex Locknut	4058 Arm Rest Bracket R	5165 Cone Frame
1668	Drive Pulley	3181	Woodruff Key #605	4059 Arm Rest Bracket L	5166 Cone Frame Assembly
1671	Idler Bracket	3182	Flip Lock Bushing	4065 Model Decal (424)	5167 Rear Frame Tube
1672	Bronze Bushing	3184	5/16-18x1 1/4Pan HdPhillips Sew.	4075 10 Amp Fuse	5170 HD Positive Neutral Spring
1673	Spring Mount	3187	#10-32 Hex Nut	4076 Headlight Assembly	5185 Torque Rod Adjuster - Long
1675	Clutch Anchor	3188	#10 Ex. Tooth Lockwasher	4077 Headlight (Sealed Beam)	5189 Bushing
1684	Transaxle Drive Belt	3189	1/2-13x5 1/2 Carriage Bolt	4092 Fuse Holder	5198 Cradle Assembly R/L
1685	"L" Rod	3191	Pop Rivet 5/32" Dia.	4124 Solenoid w/Hardware	5202 Spacer 5/8 x 1/4
1687	Idler Pulley	3193	Washer .43 x 1.38 x .25	4139 Arm Rest (offset)	6000 Center Deck Hub Assembly
1693	Control Rod	3194	Face Nut 5/8-32	4144 Seat Slide w/o Adjuster	6001 Outer Deck Hub Assembly
1699	Bumper	3195	Face Nut 1/2-27	4145 Seat Slide w/Adjuster	6002 Deck Hub Sub Assembly
1701	Wheel/Deck Hub Bearing	3196	Face Nut 7/16-28	4146 Nylon Washer	6003 Center Shaft
1702	Locking Collar	3197	5/8-11 Jam Lock Nut	4151 Utility Box Trim	6005 Outer Shaft
1712	Battery Strap	3198	1/4-20 Wing Nut w/Nylok	4190 Body Wiring Loom (424)	6009 Deck Hub Spacer
1713	Idler Roller (Nylon)	3204	1/4-20 Hex Nut w/Nylok	4191 Rear Wiring Loom (424)	6010 Deck Hub
1717	Idler Arm Bracket	3205	5/16-18 Hex Nut w/Nylok	4197 Ignition Switch	6011 MowerDeckBearing(use w/6010)
1727	Wheel Hub	3206	3/8-16 Hex Nut w/Nylok	4198 Blade Drive Clutch Switch	6013 Mower Blade
1728	Transaxle Idler Bracket	3207	1/2-13 Hex Nut w/Nylok	4199 Light Switch	6014 Deck Flange
2127	Quadrant Spring	3208	#10-24 Hex Nut w/Nylok	4201 Switch Key (for 4197)	6032 Mower Deck V-Pulley
2134	Lift Handle	3209	1/2-20 Jam Nut	4204 Flex Guard Hiring Cover	6058 V-Pulley
2166	Pivot Bolt	3220	7/16-20x2 3/4 HH Bolt Gr 5 (424)	4211 Solenoid Starter Cable	6059 Flat Idler Pulley
2172	Swivel Fitting	3221	Flatwasher 5/32	4216 Battery Ground Cable	6065 Serpentine Idler Spring
2408	Drive Chain Assembly	3222	5/8-24 Thin Profile Nylok	4217 Battery	6078 Pulley Spacer
2460	Parking Brake Decal	3224	5/8-18x3/4 HH Bolt Gr5 w/Nylok	4219 Name Decal	6100 Outer Shaft Key
2823	Oil Drain Assembly (424)	3225	3/8-16 x 2 1/4 HH Bolt	4230 Throttle Cable	6101 Center Shaft Key
3003	5/16-18 UNC x 1 1/2 HH Bolt Gr5	3227	5/16-18 x 2 HH Bolt Gr 5 (427)	4234 Battery Cable	6107 Deck Pin
3005	5/8-18 UNC Hex Nut	3240	M10x1.5x76.2 HH Bolt Gr8.8 (427)	4254 Lt.Wire-Brown/White w/Term 48"	6109 Serpentine Blade Drive Belt
3007	1/4-20 UNC Hex Nut	3241	M8x1.25x25.4 HH Bolt Gr8.8 (427)	4255 Wire Tie - Long	6111 Deck Drive Belt
3008	1/4 ID x 3/4 OD Flatwasher	3242	M8x1.25x69.85 HH Bolt Gr8.8 (427)	4257 Utility Box w/Trim	6113 Blade Washer
3009	5/16-18UNCx1 3/4"HH BoltGr5(424)	3248	5/16 ID x 1/8 Thick Washer	4258 Seat Bottom	6159 Stabilizer Arm
3010	1/2 Dia. x 2 1/4 Rd. Hd. Rivet	3300	Foam Pad	4259 Seat Back	6181 Deflector
3012	3/8-16 UNC Hex Nut	3500	Ball Joint/Control Rod RH Thread	4261 Trim - Arm Bracket	6192 Trash Guard
3013	1/2-13 UNC Hex Locknut	3502	Hand Grip	4277 Rear Wiring Loom (427)	6195 Lift Attach Arm
3014	1/4-20 UNC x 3/4 HH Bolt Gr 5	3503	Ball Joint/Control Rod LH Thread	4323 Body Wiring Loom (427)	6200 Mower Deck Assembly
3019	5/16 Helical Lockwasher	3404	Double Ball Joint	5005 Discup	6201 Mower Deck Pan
3020	5/16 Std. Flatwasher	3507	Floor Pad - Long	5011 Support Shaft	6203 Idler Bracket
3029	Front Grommet	3508	Floor Pad - Short	5015 Sprocket - 24T	8502 Caster Axle Kit
3031	5/16-18 UNC Acorn Nut	3511	Adhesive Bumper Pad	5019 Transaxle Chain	8503 Front Rim
3033	1/2 SAE Flatwasher	3531	Decal - Operating Inst.	5028 Transaxle Bearing	8504 Seat Slide Spring
3037	3/8-24 UNF x 1 1/4 HH Bolt Gr5	3536	Warning Label - Danger	5036 Pivot Spring	8505 Control Lever Adpt-Wide(ea.)
3046	3/8-16 UNC x 2 HH Bolt	3552	Tank Mount Bracket - Long	5046 Positive Neutral Rod	8506 Tie Bar Assembly
3047	3/8-24 UNF Hex Locknut	3553	Tank Mount Bracket - Short	5050 Positive Neutral Kit	8540 Seat Assembly
3052	3/32 Dia. x 1" Cotter Pin	3554	Fuel Cap/Gauge	5054 Transaxle Tool Kit	8541 Wiring Kit (424)
3056	5/16 Fender Washer	3556	Tank Support L	5056 Alignment Tool	8563 Rotor Assy. (Elec. Clutch)
3057	3/8 Std. Flatwasher	3558	2 Gal Tank w/Cap-Gauge	5079 HO Transaxle Pulley	8564 Armature Assy (Elec. Clutch)
3061	5/16-18UNCx3/4 Soc. Set Screw	3578	Nylon Bushing	5084 Brake Drum	8565 Field Assy (Elec. Clutch)
3063	#10-24UNCx1 1/4 Rd. Hd. Screw	3579	Electric Clutch	5085 Brake Band	8566 Body w/Decals (424)
3065	3/8 Helical Lockwasher	3584	Decal-Ignition Switch/Bl. Drive	5087 Brake Spacer 3/8 x 1/2	8567 Body w/Decals (427)
3066	3/16 Std. Flatwasher	3585	Decal - Cutting Height	5088 Brake Shaft	8574 Wheel Hub Assembly
3072	1/8 x 1 3/4 Hair Cotter Pin	3587	Decal - Lights	5097 Brake Lever	8576 Rear Rim
3074	5/16-24 UNF Hex Jam Nut	3589	Spacer - Electric Clutch	5100 Brake Rod	8582 Mower Deck Pan w/Lift Arms
3076	3/8-24 UNF Hex Nut	3590	Key 1/4 sq x 1/2	5101 Brake Link	8584 Wiring Kit (427)
3077	5/16-18 UNC x 2 3/4 HH Bolt Gr5	3597	Battery Cover	5103 Eye Bolt	8602 Hardware Kit (Elec. Clutch)
					9079 Upper Control Lever LHw/grl
					9080 Upper Control Lever RHw/grl
					9090 Rear Wheel & Tire

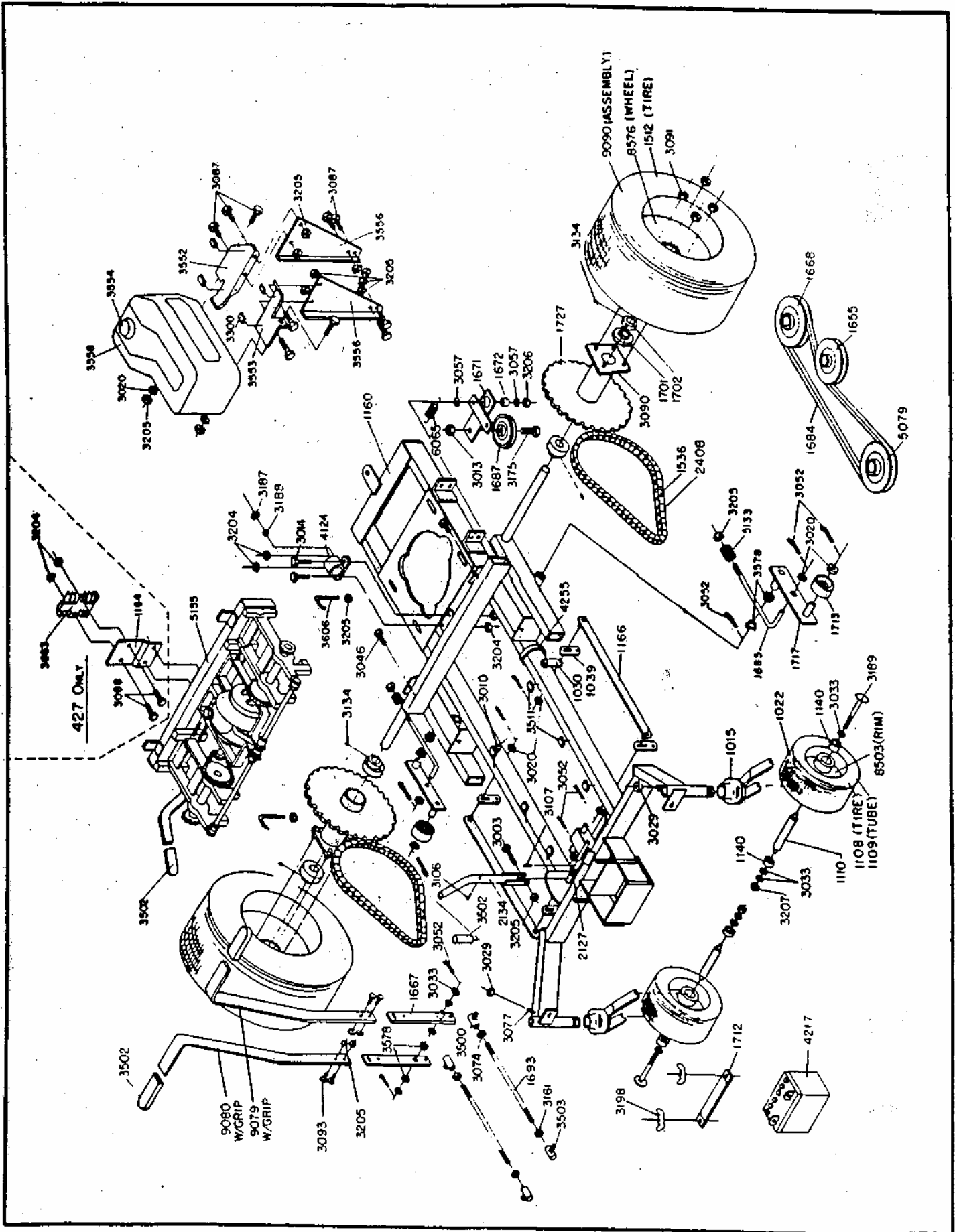


Illustration - Chassis Assembly (Models ZTR 424 - 427)

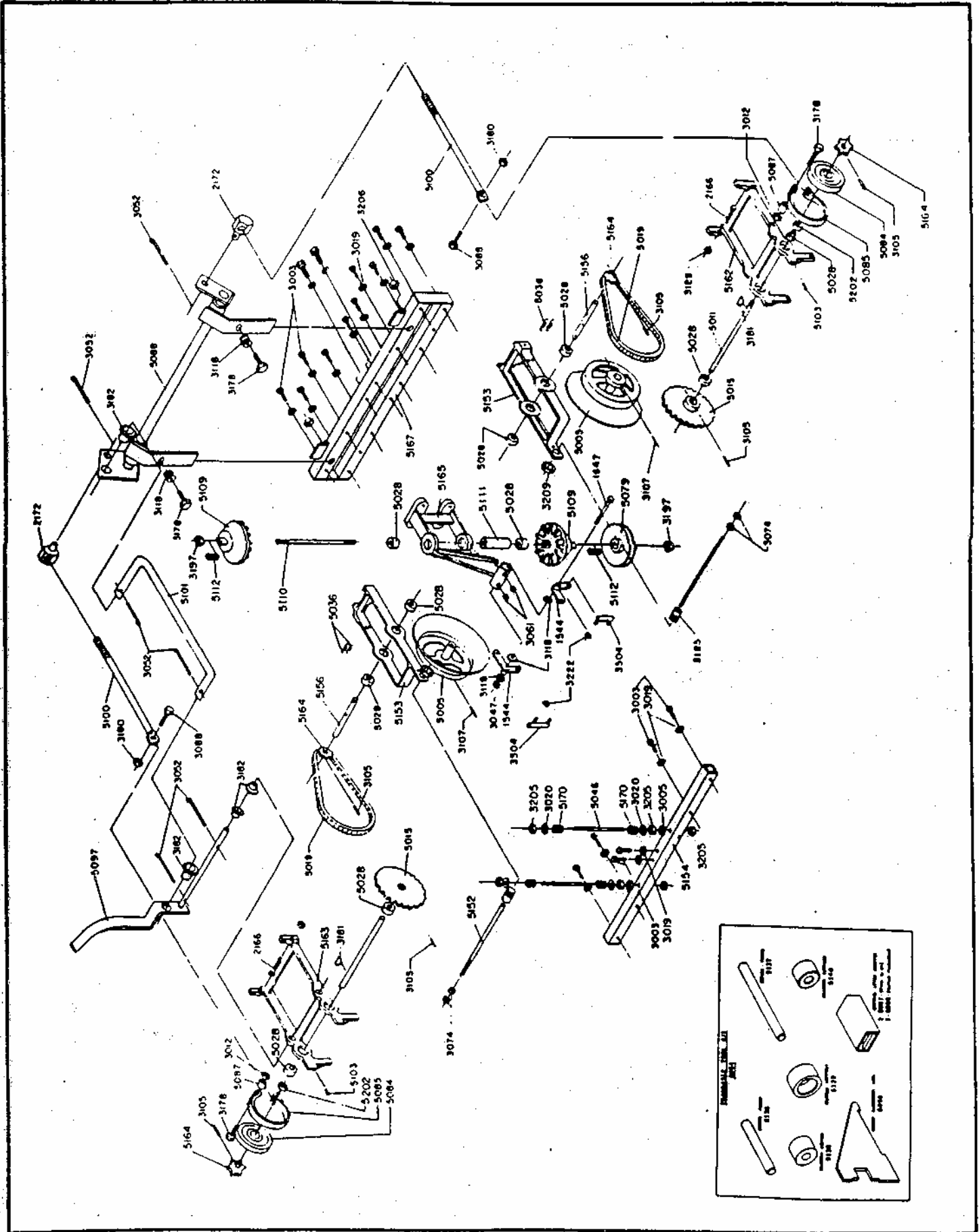


Illustration - Transaxle Assembly (Models ZTR 424 - 427)

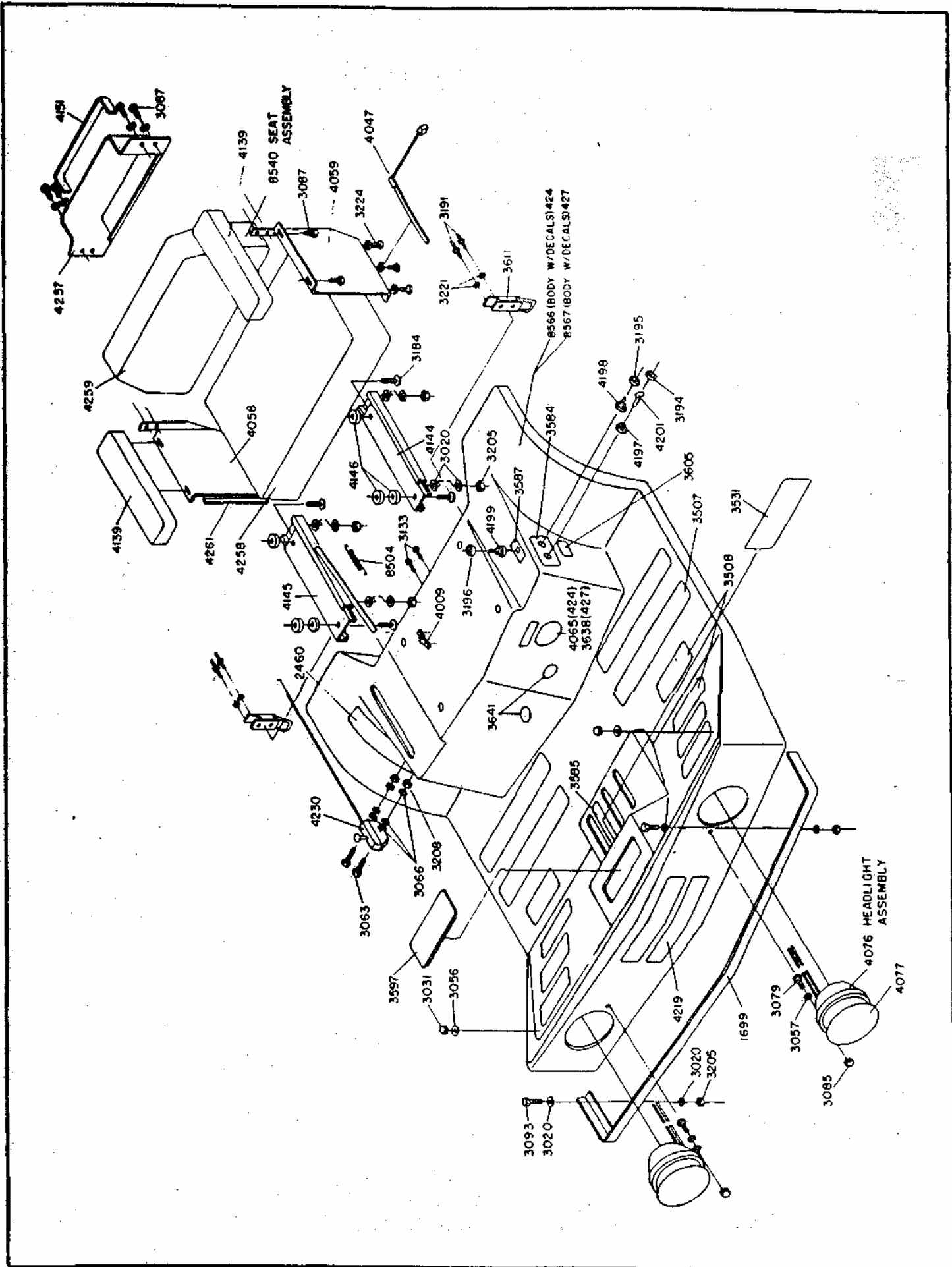


Illustration - Body Assembly (Models ZTR 424 - 427)

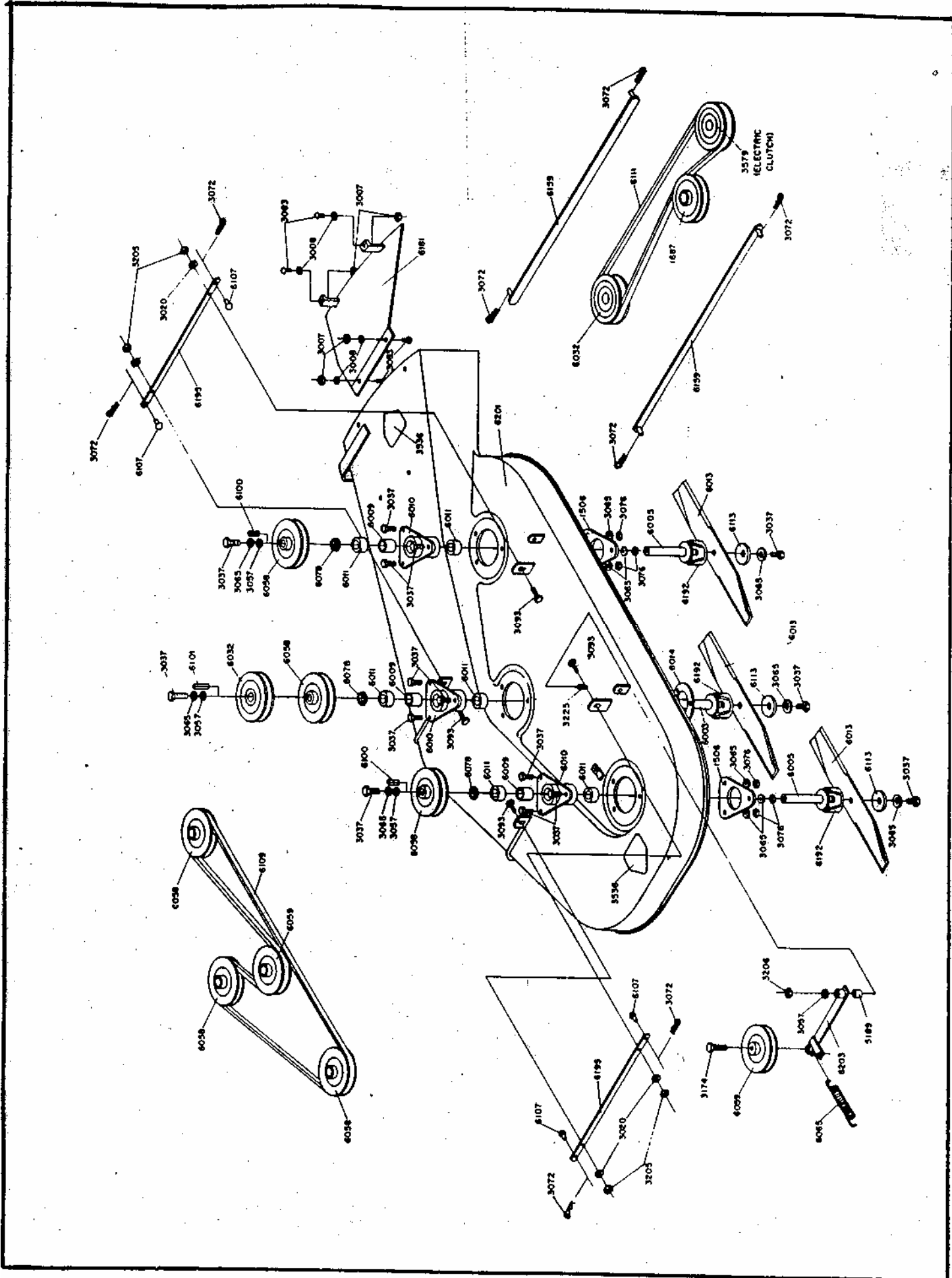
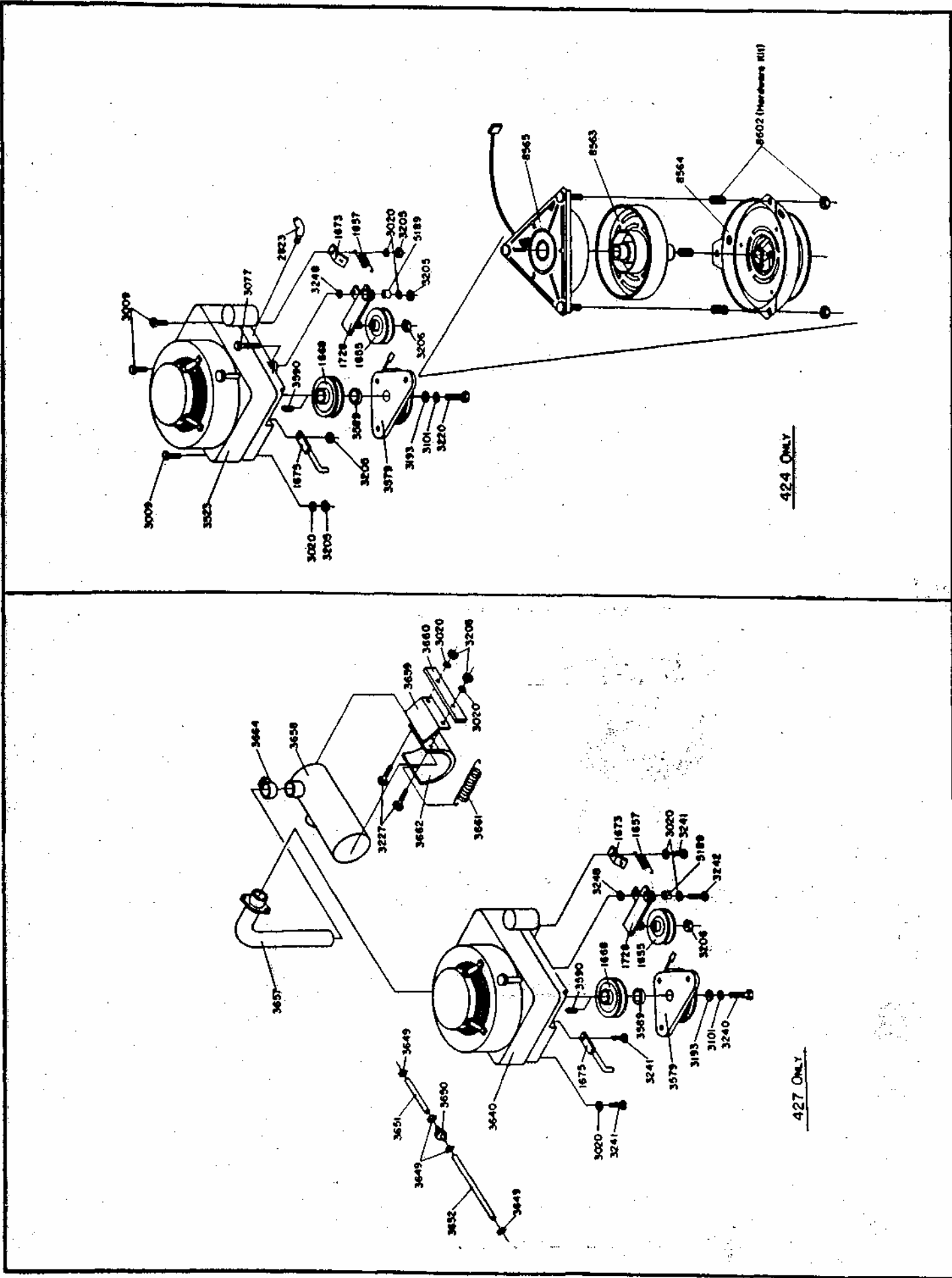


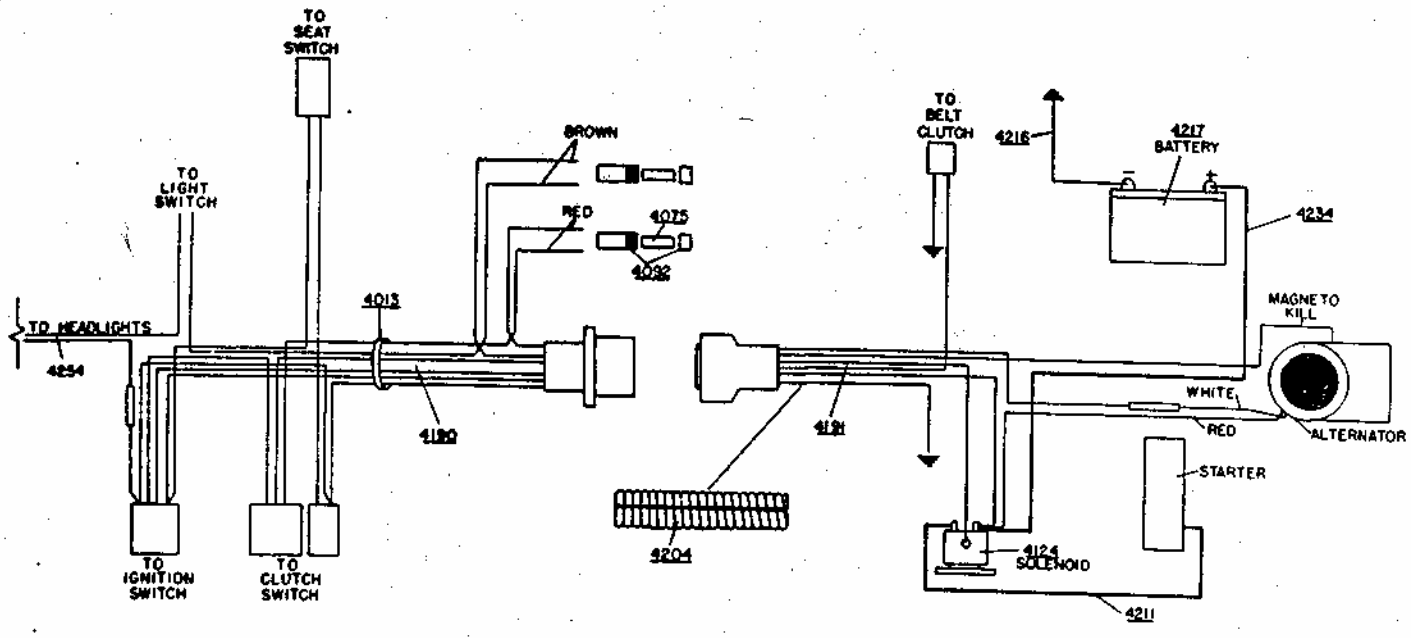
Illustration - Mower Deck Assembly 42" (Models ZTR 424 - 427)



424 ONLY

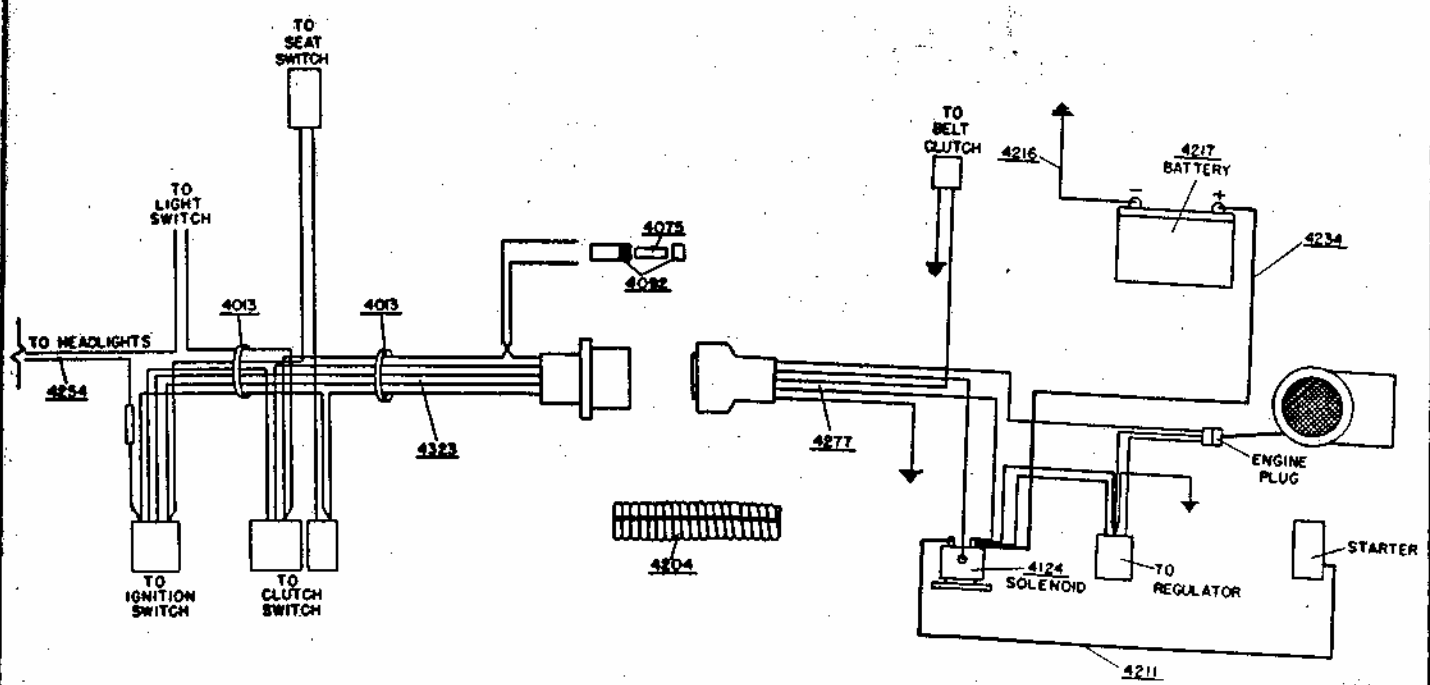
427 ONLY

Illustration - Engine (Models ZTR 424 - 427)



BODY WIRING LOOM - 4190  
 REAR WIRING LOOM - 4191  
 WIRING KIT - 8541  
 (SEE ASSEMBLY BREAKDOWN)

**Model 424**



BODY WIRING LOOM - 4323  
 REAR WIRING LOOM - 4277  
 WIRING KIT - 8584  
 (SEE ASSEMBLY BREAKDOWN)

**Model 427**

Illustration - Wiring (Models ZTR 424 - 427)